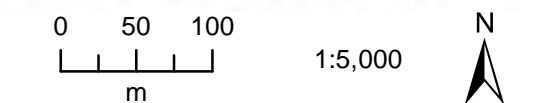
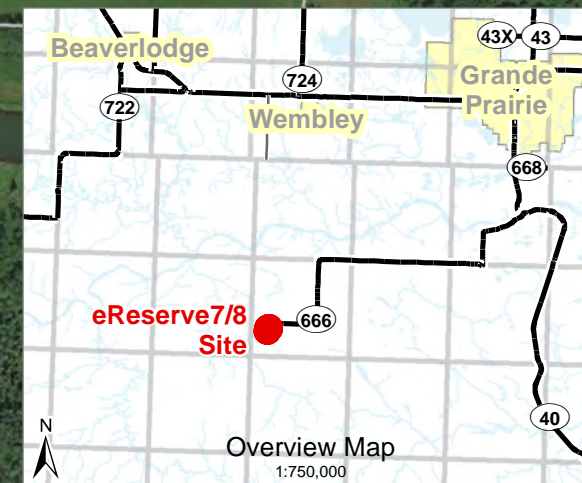
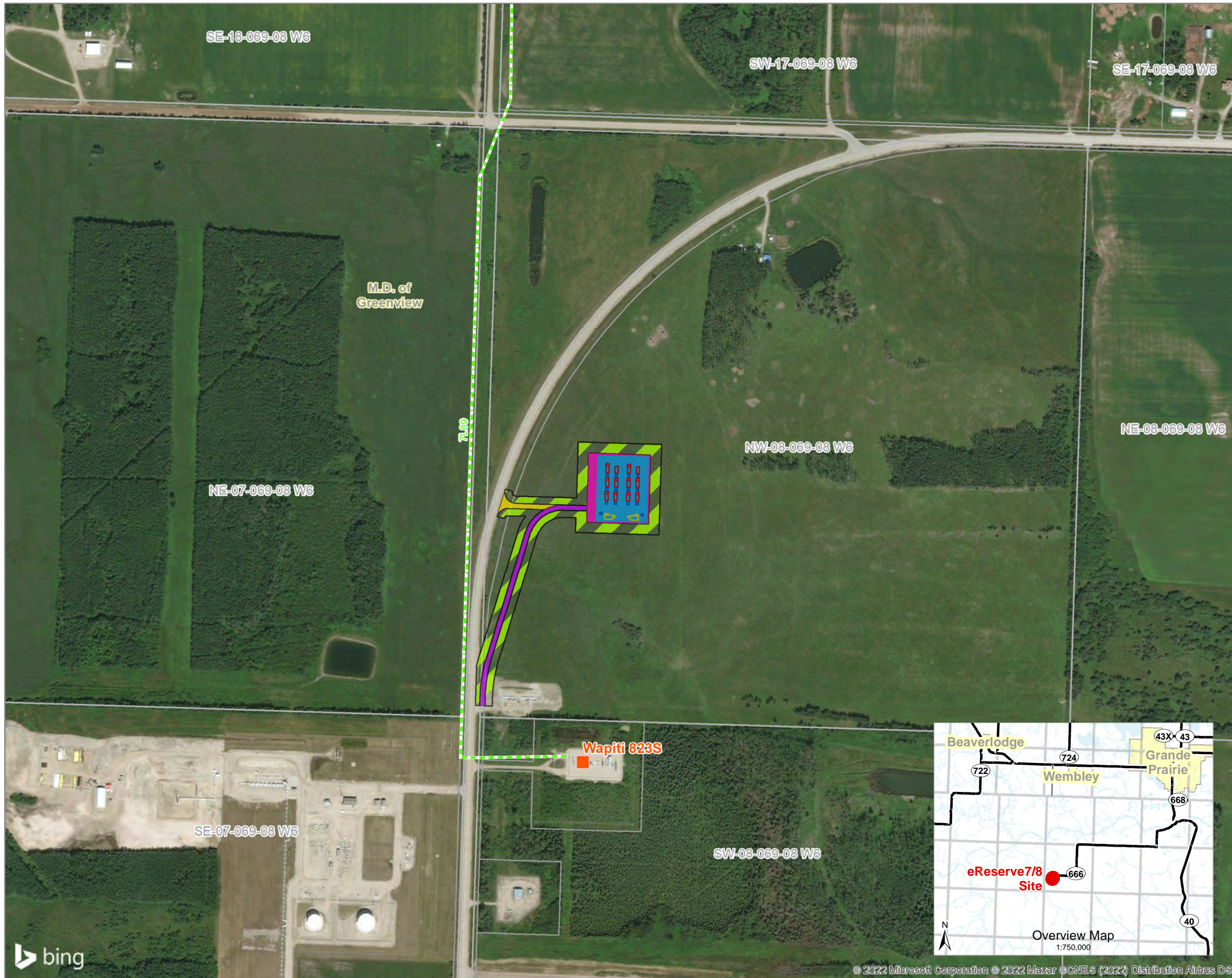


Proposed eReserve7/8

- Existing Substation
- - - Existing 138 kV Transmission Line
- Parcel Boundary
- Facility Component**
- Battery Module
- Control Building
- Transformer
- Footprint Component**
- Access Road
- Fenced Area
- Gravel Pad
- Temporary Access Road
- Temporary Workspace



Produced For: Enfinite LP	Produced By: P. Coulas
Map Date: January 28, 2022	Map #: ENF21114-001 Rev. 0
<small>This document is created solely for the use of Enfinite LP. Maskwa Environmental Consulting Ltd. assumes no liability to any other third party for any representations contained in this drawing. Although there is no reason to believe that there are any errors associated with the data used to create this map product, users of this data are advised that errors may be present. Scale of the map is 1:5,000, when printed at 11" by 17".</small>	
<small>Coordinate System: NAD 1983 CSRS UTM Zone 11N Path: \\Svmaskwa01\gis\Clients\Enfinite\ENF21114_Wapiti003_Mapping\20220121_NewsletterMap</small>	